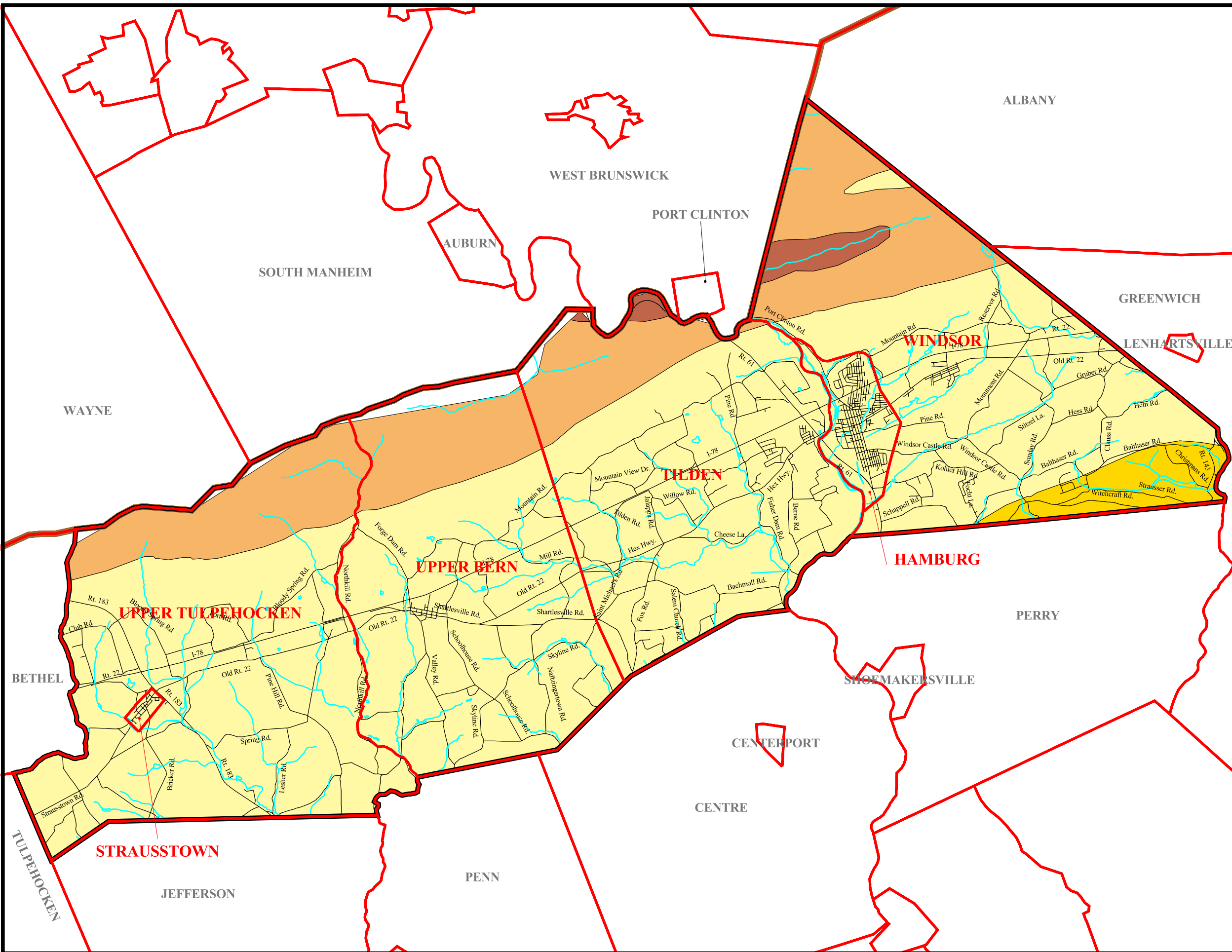
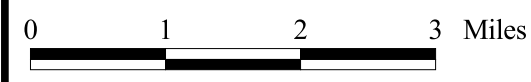


**Geology and Aquifer Yield by Formation in Gallons per Minute, The Joint Comprehensive Plan For Northern Berks County**

- Geology and Aquifer Yield by Formation (gpm)
- Bloomsburg Fm (45 gpm)
  - Hamburg Sequence (30 gpm)
  - Hamburg Sequence (Shale with Graywacke) (30 gpm)
  - Shawahgunk Fm (35 gpm)



Data source: Berks County GIS & SSM.



**Spotts, Stevens and McCoy, Inc.**  
 345 N. Wyomissing Blvd.  
 Reading, PA 19610-0307  
 Tel: 610-621-2000 Fax: 610-376-6950

01/14/01

g:\projects\tw6000\6128\  
 w6128002\projects\  
 w6128\_002.apr