

Everyone uses water everyday! Farmers use it to water their crops. You use it to take a bath and swim. Fish use it as their home. Water is everywhere even in places you might not know. Water is the most valuable natural resource on the earth. We can't live without water which means we need to use it wisely. The more you learn about water, the more you'll see that it affects just about everything we do. But we also must be concerned about water in other ways. What we do to the land affects the health of our streams, lakes and other bodies of water.

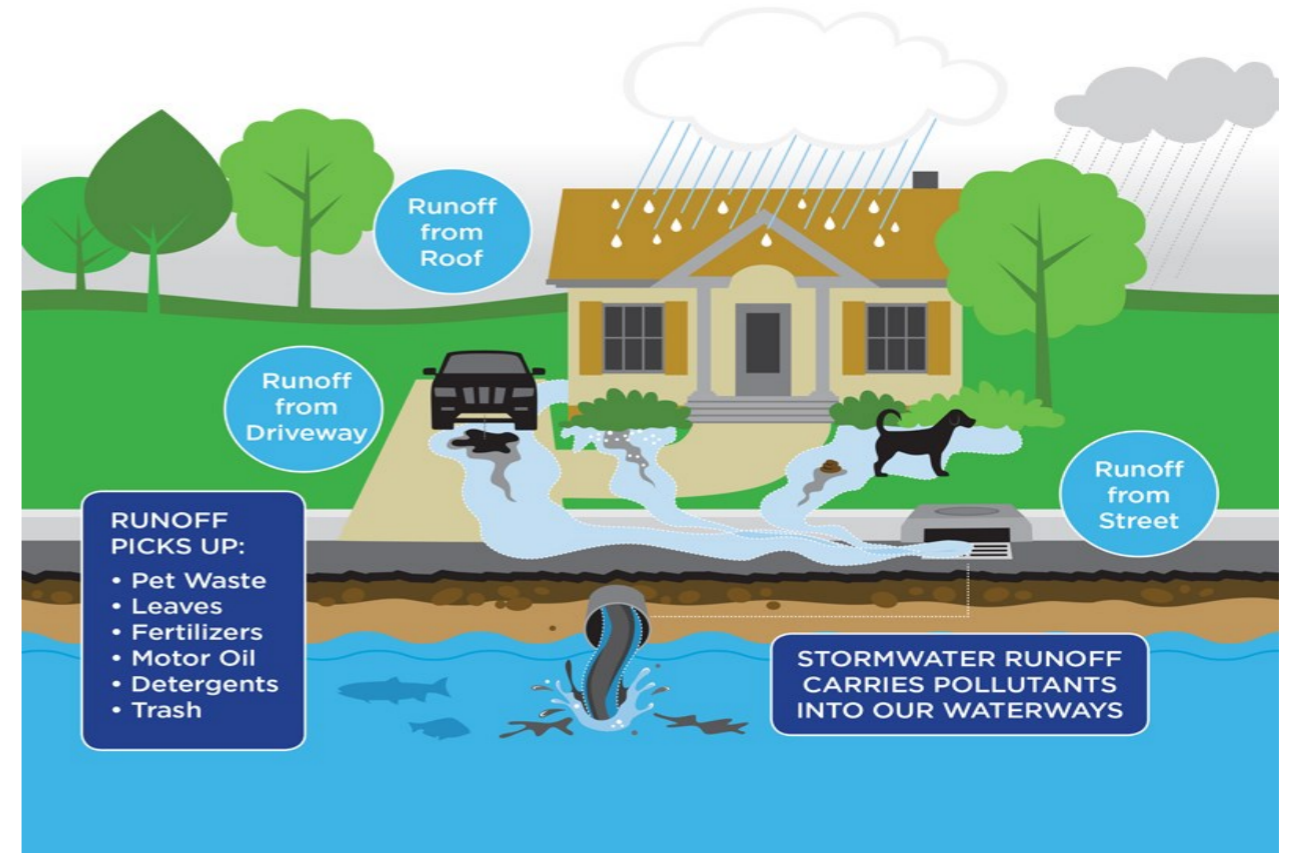
Your **watershed** is an area of land from which water drains to a single water body like a river. Everything that happens in your watershed affects how clean the water is before it comes out of your faucet.



Do you know how water comes to your house? There are two ways that water comes to your house. One way is the water is collected through a system of pipes and carried to the **Water treatment plant**. The water is then cleaned to remove all pollution so it is safe to drink. The second way is through a private **well** which collects water underground beneath your yard.

Water Vocabulary Words

- Stormwater:** water that flows over land from rain or snow
- Treatment Plant:** a facility for cleaning and treating fresh water for drinking
- Watershed:** area of land from which water drains to a single water body like a river
- Well:** a deep hole made in the ground through which water can be removed



How stormwater carries pollution

Remember everything you do in your watershed affects the water that you drink and play in. Water from rain and snow that is carried away is called **stormwater**. Your neighborhood stormdrains carry the stormwater and anything else in its path to your local streams and water bodies. Look in the picture above, can you see what's wrong?

Water Facts

How long can a person live without water?

Approximately one week, depending upon conditions

How much water is used to flush a toilet?

2-7 gallons

How much water is used to brush your teeth?

2 gallons

How much water does an individual use daily?

50 gallons

