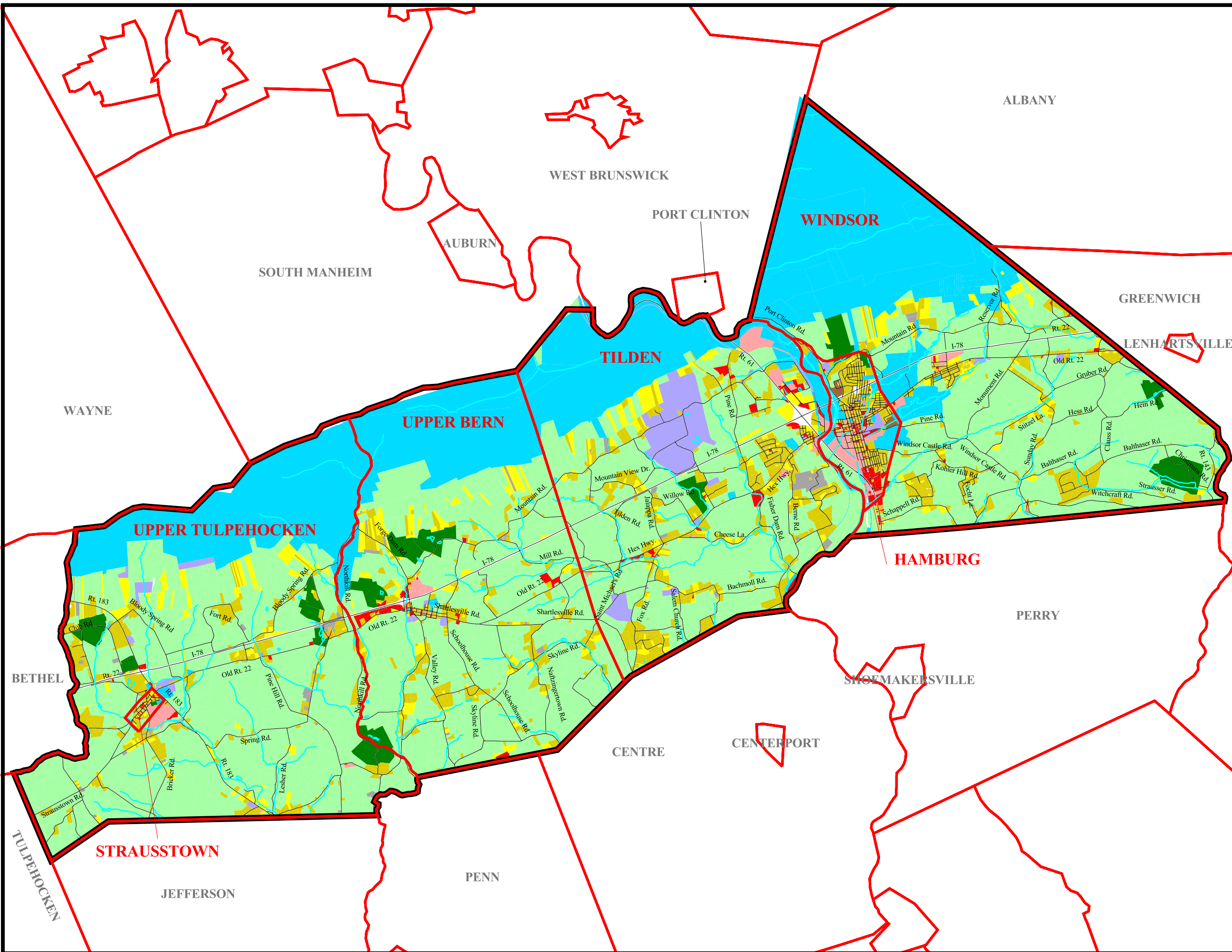
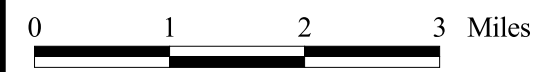


**Existing Land Use Map
The Joint Comprehensive Plan
For Northern Berks County**

- Existing Land Use
- Commercial
 - Farm (includes Farmland & Woodland)
 - Industrial
 - Institutional
 - Public
 - Residential 1 Family
 - Residential 2 to 4 Family
 - Residential Multi Family
 - Residential Mobile Home
 - Open
 - Private Recreation



Data source: Berks County GIS & SSM.



Spotts, Stevens and McCoy, Inc.
345 N. Wyomissing Blvd.
Reading, PA 19610-0307
Tel: 610-621-2000 Fax: 610-376-6950

09/14/01

g:\projects\w6000\w6128\
w6128002\projects\
w6128_002.apr